

162 ACRES CRP & DRYLAND CHEYENNE COUNTY, KS



\$105,500

LEGAL DESCRIPTION

NW/4 of 6-1-41, CHEYENNE COUNTY, KANSAS

GENERAL INFORMATION

FSA Information:

Farmland Acres: **162 Acres**
CRP Acres: **157.9 Acres**

CRP Information:

- 66.3 Acres contracted @ \$32.05/acre with a total annual payment of \$2,125. Contract expires 9/30/2016.
- 16.2 Acres contracted @ \$30.00/acre with a total annual payment of \$486. Contract expires 9/30/2012.
- 75.4 acres contracted @ \$34.10/acre with a total annual payment of \$2,563.60. Contract expires 9/30/2020.

Minerals: There is a 1/2 interest mineral reservation through May 7, 2017. The reservation will continue past May 7, 2017 for any production development during the reservation period. The other 1/2 will pass with the land @ closing.

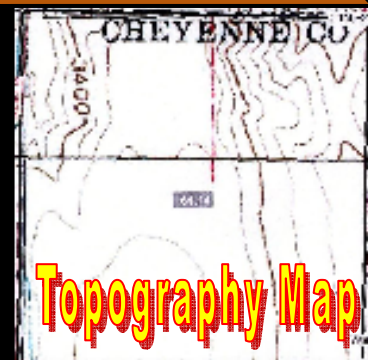
Possession: Day of closing with any CRP payments being prorated.

2010 Taxes: \$197.56

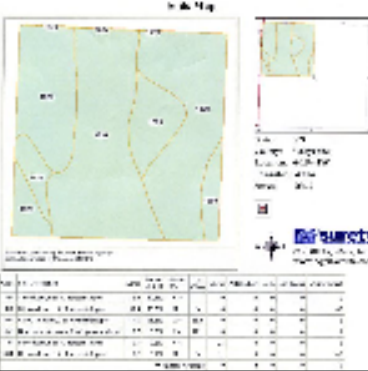
Driving Directions: Just South West of Haigler, NE, immediately south of the Kansas-Nebraska state line, on the East side of Road 5.



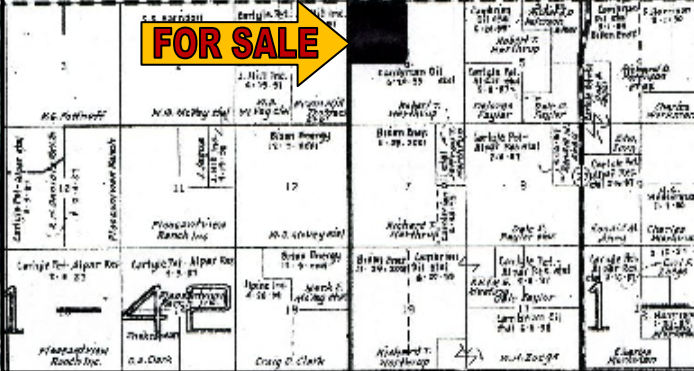
**WE
SELL**



Topography Map



Aerial Map



FOR SALE



STOCK REALTY & AUCTION CO.

Land Brokers and Auctioneers

Residential Services

390 N. FRANKLIN, SUITE 100
COLBY, KS 67701

OFFICE: 785-460-7653 (SOLD) FAX: 785-460-7658

MOLLY J. OLIVER, RESIDENTIAL SPECIALIST

www.stockrealtyandauction.com mollyo@stockrealtyandauction.com



*Residential
785-462-6133*



Information was obtained from sources deemed reliable, but Broker makes no guarantees as to accuracy. All prospective buyers urged to fully inspect property and rely on their own conclusions.