

# FOR SALE

**160+/- Acres**  
**Holt County**

**PRICED AT:**  
**\$2350/Acre**

## LEGAL DESCRIPTION

The SW 1/4 of Section 26-26-12W Holt County NE containing 160+/- acres

## GENERAL DESCRIPTION

**Directions:** From Chambers, NE go 3 miles east and 1/2 south, or from the Hwy 281 & 95 intersection go 2 miles west and 1/2 south.

### Pivot Irrigated Farm Ground!!

Here's your opportunity to add this quarter of Pivot Irrigated Crop ground to your operation.

- 7-Tower Zimmatic Pivot

**2011 TAXES:** \$2,223.00

**FSA PAYMENT:** \*\*Approx. \$3,500.00

\*\* Approx. due to splitting of tract.

**Brockhaus Family,**  
**Owners**



**Jim Stock**  
1-402-920-0604  
1-800-920-0604



**STOCK REALTY & AUCTION CO.**  
*Land Brokers & Auctioneers*

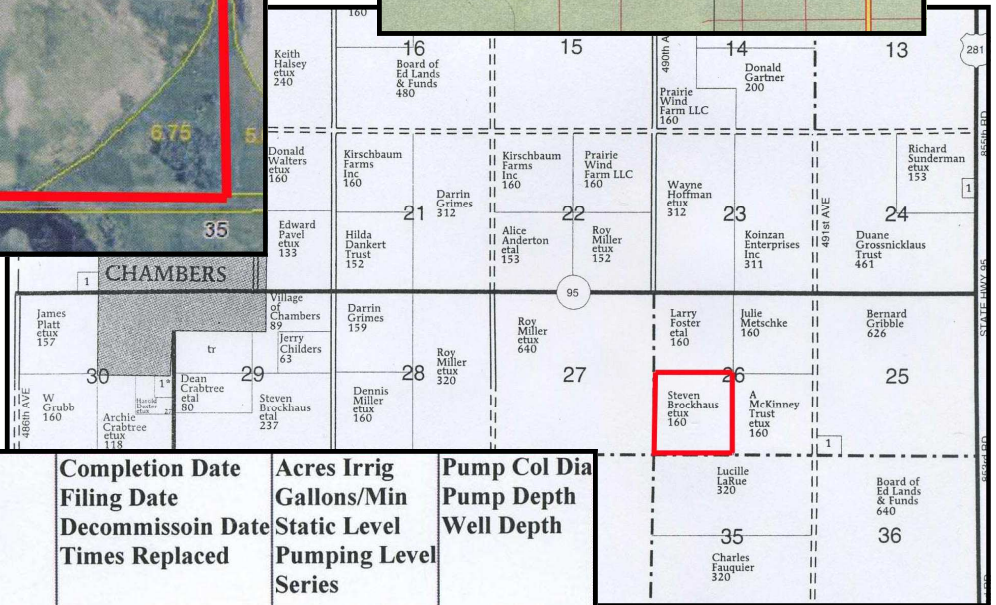
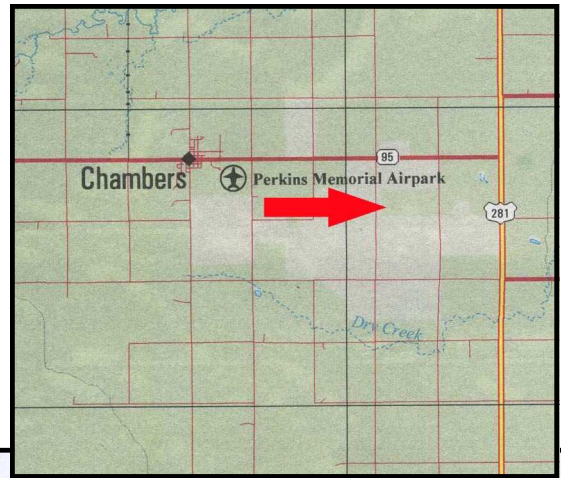
1-800-WE SELL-8  
[www.stockra.com](http://www.stockra.com)



**John Stock**  
1-402-920-3180  
1-866-920-3180

Information was obtained from sources deemed reliable, but broker makes no guarantees as to accuracy. All Prospective buyers urged to fully inspect property and rely on conclusions.

# MAPS/INFORMATION



Registration# Well ID Permit Number Well Log	Use Status	County Name NRD Name Well Location Footage Latitude Longitude	Completion Date Filing Date Decommission Date Times Replaced	Acres Irrig Gallons/Min Static Level Pumping Level Series	Pump Col Dia Pump Depth Well Depth
G-063231 WellID: 71132 <a href="#">Other InfoLogs</a> <a href="#">View as PDF</a>	I A	Holt Upper Elkhorn 26N 12W 26 SWSW <a href="#">Map It</a>	11/13/1979 2/13/1980	160 800 gpm 8 ft 50 ft PRO	8 in --- 132 ft

**Wetland Status:** Tract contains a wetland or farmed wetland

**WL Violations:** None

Farmland	Cropland	DCP Cropland	WBP	WRP/EWP	CRP Cropland	GRP	
160.0	133.9	133.9	0.0	0.0	0.0	0.0	
State Conservation	Other Conservation	Effective DCP Cropland	Double Cropped	NAP	MPL/FWP		
0.0	0.0	133.9	0.0	0.0	0.0		
Crop	Base Acreage	Direct Yield	CC Yield	CRP Reduction	CRP Pending	CRP Yield	CCC-505 CRP Reduction
CORN	132.0	112	112	0.0	0.0	0	0.0
SOYBEANS	0.1	30	30	0.0	0.0	0	0.0
<b>Total Base Acres:</b>		132.1					