

FOR SALE

79+/- Acres

Polk County

PRICED AT:
\$6000/acre

LEGAL DESCRIPTION

S 1/2 of the NW 1/4 in Section 27-T14N-R3W, Polk County, NE containing 79.62+/- Acres

GENERAL DESCRIPTION

Directions: From Osceola, NE go 5 miles west on Hwy 92 to J Road then go 1 1/4 miles south, Farm will be on the east side of road. (J Rd is the junction of Hwy 92 & 39)

Gravity Irrigated Crop Ground

Here's an opportunity to add a nice piece of gravity irrigated crop ground to your operation, only 1 1/4 miles off of Hwy 92 just west of Osceola, NE.

Hurry This Won't Last Long!!

**Anderson Family,
Owners**

2011 TAXES: \$3,289.76
FSA PAYMENT: \$2,028.00



Mark Stock
402-276-2077

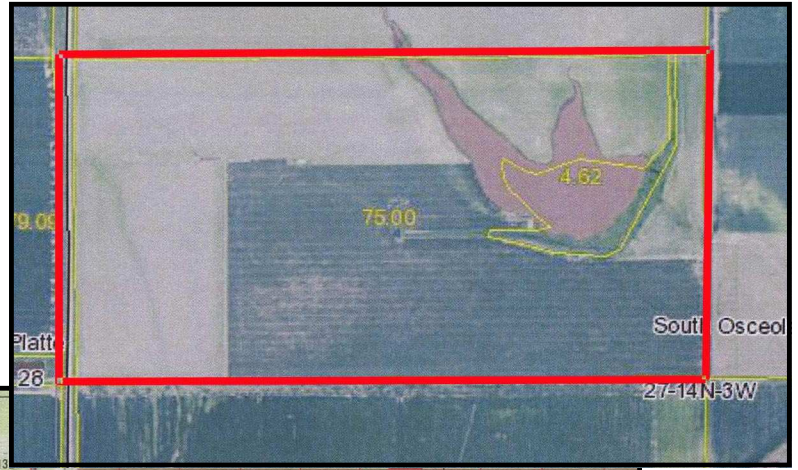
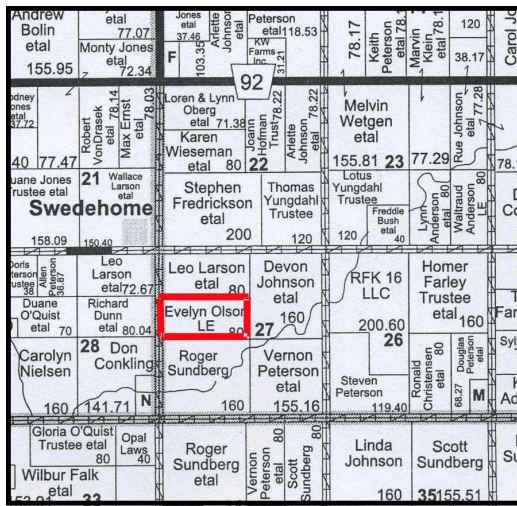


STOCK REALTY & AUCTION CO.
Land Brokers & Auctioneers

1-800-WE SELL-8
www.stockra.com

Information was obtained from sources deemed reliable, but broker makes no guarantees as to accuracy. All Prospective buyers urged to fully inspect property and rely on conclusions.

INFORMATION



Farmland	Cropland	DCP Cropland	WBP	WRP/EWP	CRP Cropland	GRP	
80.0	75.0	75.0	0.0	0.0	0.0	0.0	
State Conservation	Other Conservation	Effective DCP Cropland	Double Cropped	NAP	MPL/FWP		
0.0	0.0	75.0	0.0	0.0	0.0		
Crop	Base Acreage	Direct Yield	CC Yield	CRP Reduction	CRP Pending	CRP Yield	CCC-505 CRP Reduction
CORN	23.2	116	116	0.0	0.0	0	0.0
GRAIN SORGHUM	51.1	91	91	0.0	0.0	0	0.0
SOYBEANS	0.5	32	32	0.0	0.0	0	0.0
Total Base Acres:	74.8						

Registration# Well ID Permit Number Well Log	Use Status	County Name NRD Name Well Location Footage Latitude Longitude	Completion Date Filing Date Decommission Date Times Replaced	Acres Irrig Gallons/Min Static Level Pumping Level Series	Pump Col Dia Pump Depth Well Depth
G-017274 WellID: 23133 Other Info Logs View as PDF	I A	Polk Upper Big Blue 14N 3W 27 SWNW 1775 N 1010 W Map It 41° 9' 29.03" 97° 39' 9.11"	4/16/1955 12/31/1958	84 600 gpm 54 ft 70 ft PRO	6 in --- 97 ft